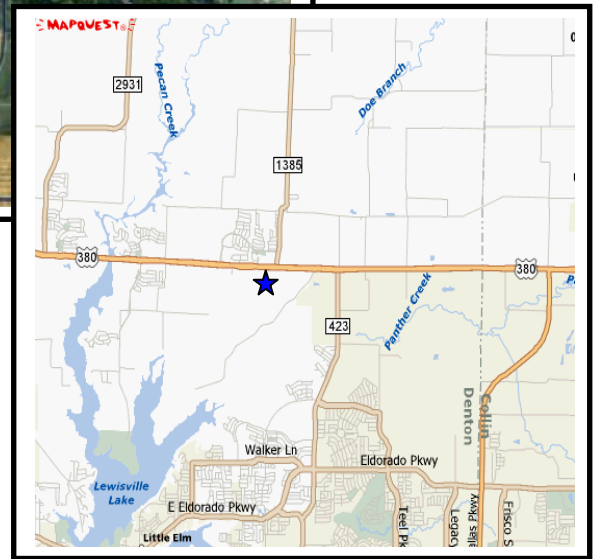
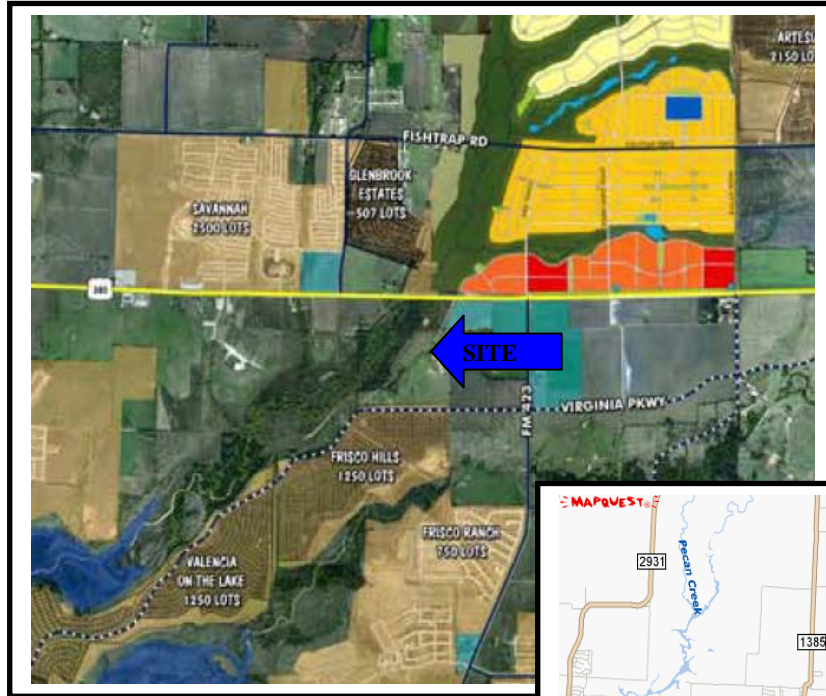


# FOR SALE LAND

+/- 18.5 ACRES

SWQ of Hwy 380 & Doe Creek Road, Little Elm, TX 75035



## FEATURES:

- Approximately 18.5 Acres
- Perfect Church or School Site!!
- Tranquil Setting
- Picturesque views with beautiful creek
- Great Potential for Outdoor Chapel, Walking Trails, Sports Fields, Park & Picnic Areas, Church Camps, etc.
- Minutes from Dallas North Tollway
- Explosive Growth Area at U.S. Hwy 380
- Frisco ISD
- Asking Price: \$675,000



Exclusively Offered By:

Kara Porter  
kporter@capstonecommercial.com  
Mark Pierce  
mpierce@capstonecommercial.com

(972) 250.5860

5055 Keller Springs Rd • Suite 100 • Addison, Texas 75001 • 972.250.5800 • Fax 972.250.5801

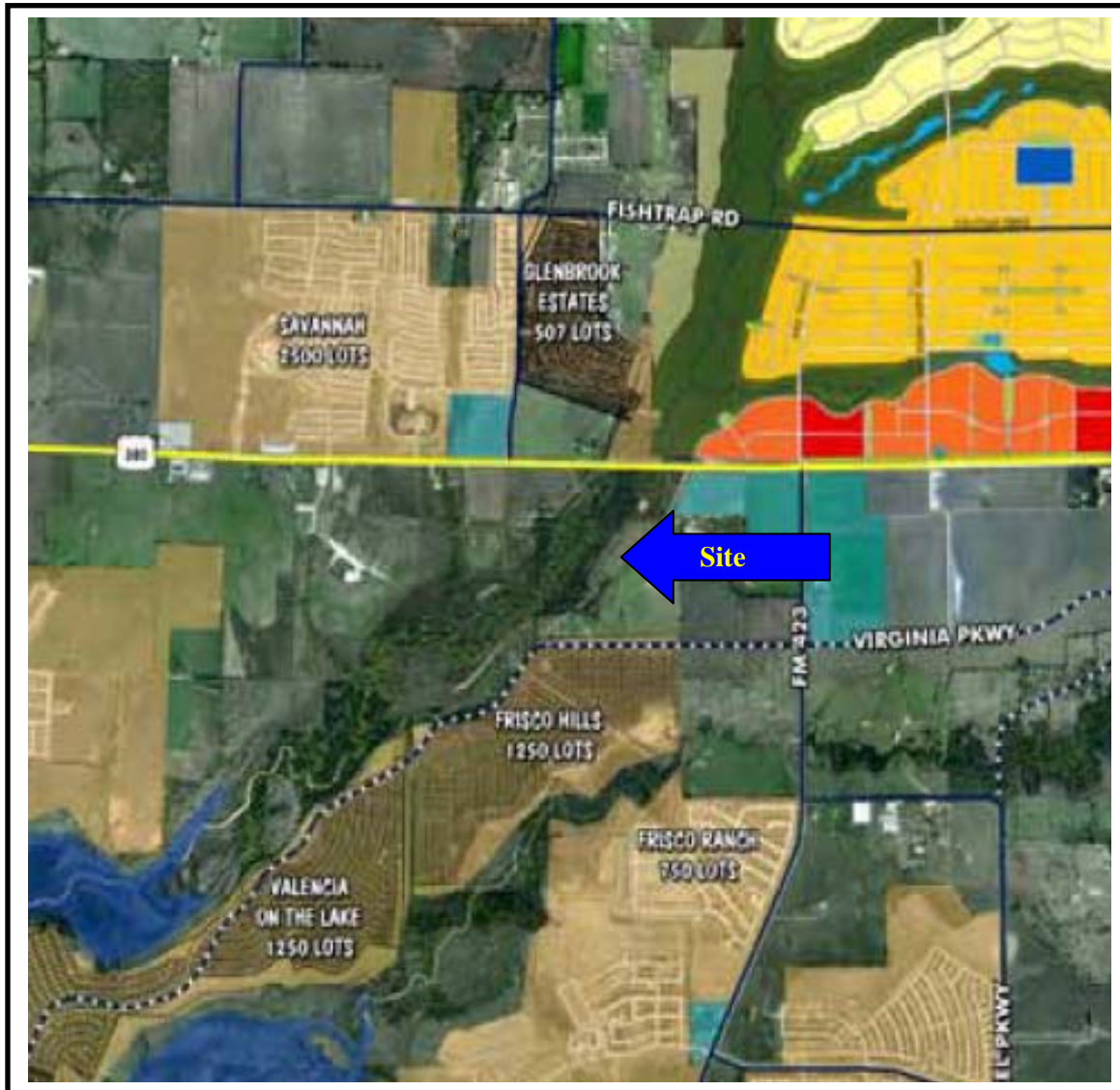
The information contained herein was obtained from sources believed reliable; however, Capstone Commercial Real Estate Group, Inc. makes no guarantees, warranties, or representation as to the completeness or accuracy thereof. The presentation of this property is submitted subject to errors, change of price or conditions, prior sale or lease, or withdrawal without notice.

Aerial Photo

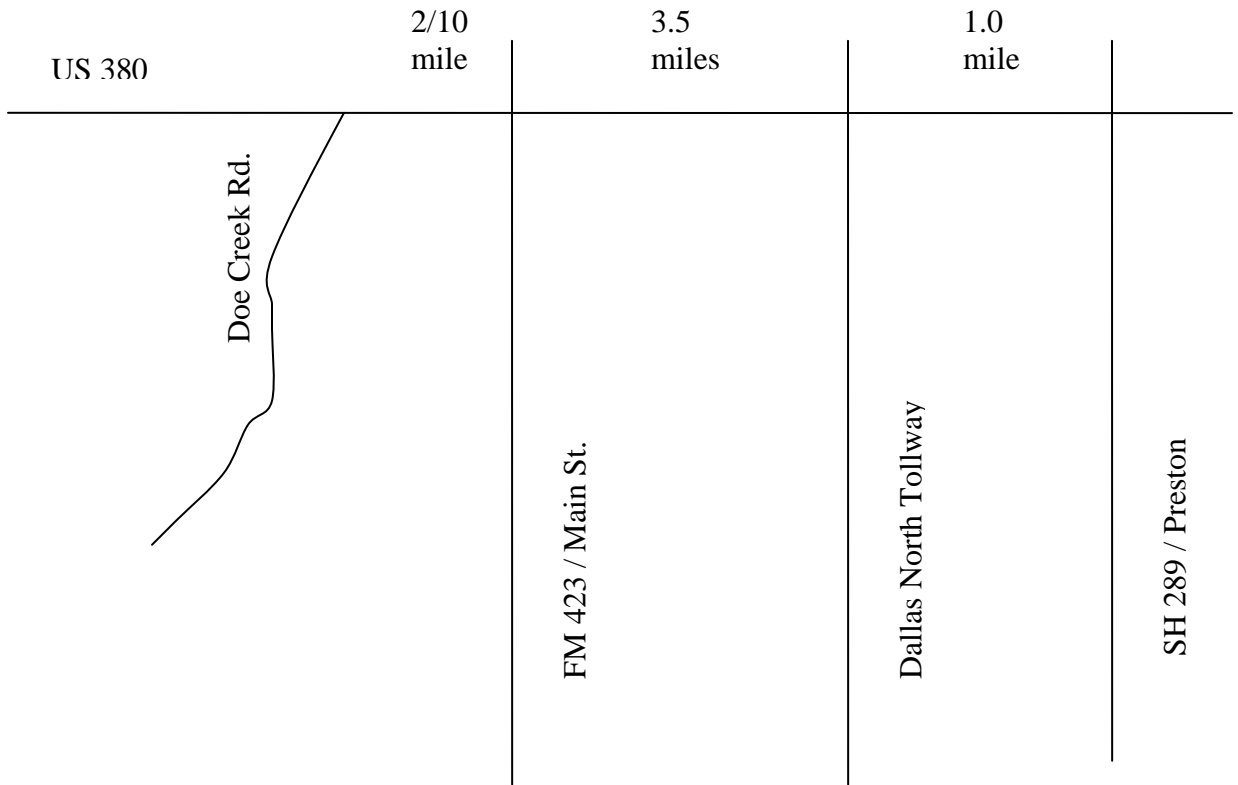


For information contact:  
Kara Porter/Mark Pierce  
**CAPSTONE COMMERCIAL**  
972.250.5860  
972.250.5801 fax  
[kporter@capstonecommercial.com](mailto:kporter@capstonecommercial.com)  
[mpierce@capstonecommercial.com](mailto:mpierce@capstonecommercial.com)

# Aerial Photo

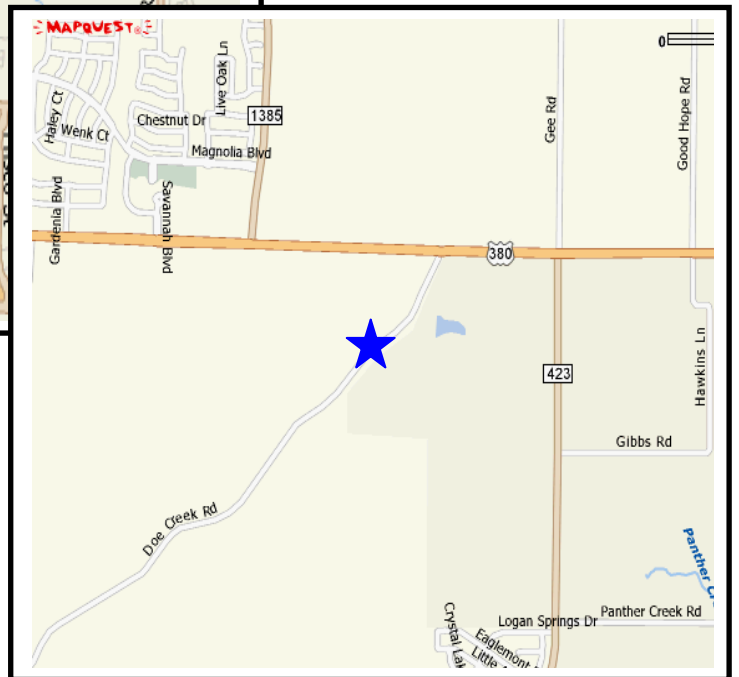
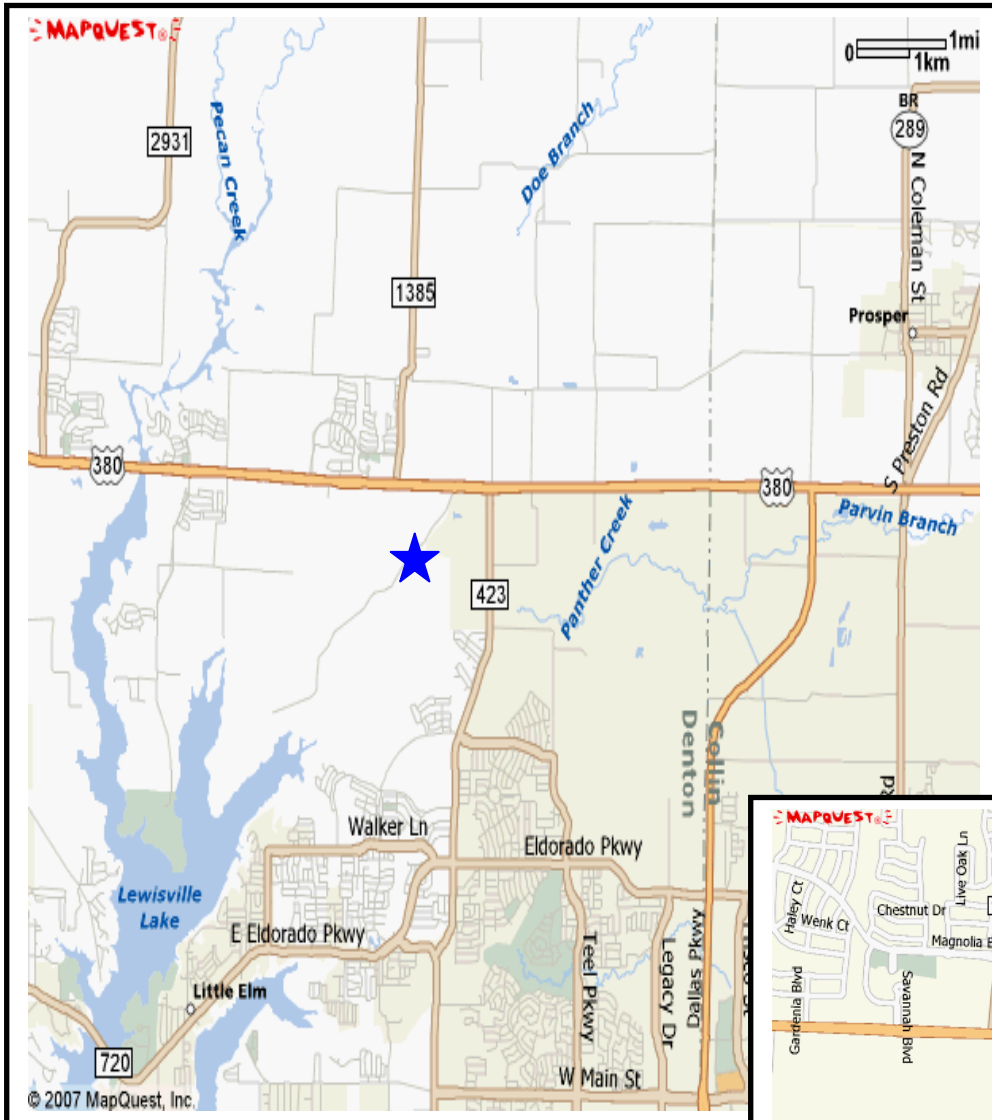


For information contact:  
Kara Porter/Mark Pierce  
**CAPSTONE COMMERCIAL**  
972.250.5860  
972.250.5801 fax  
[kporter@capstonecommercial.com](mailto:kporter@capstonecommercial.com)  
[mpierce@capstonecommercial.com](mailto:mpierce@capstonecommercial.com)



For information contact:  
Kara Porter/Mark Pierce  
**CAPSTONE COMMERCIAL**  
972.250.5860  
972.250.5801 fax  
[kporter@capstonecommercial.com](mailto:kporter@capstonecommercial.com)  
[mpierce@capstonecommercial.com](mailto:mpierce@capstonecommercial.com)

# Map



For information contact:  
Kara Porter/Mark Pierce  
**CAPSTONE COMMERCIAL**  
972.250.5860  
972.250.5801 fax  
[kporter@capstonecommercial.com](mailto:kporter@capstonecommercial.com)  
[mpierce@capstonecommercial.com](mailto:mpierce@capstonecommercial.com)