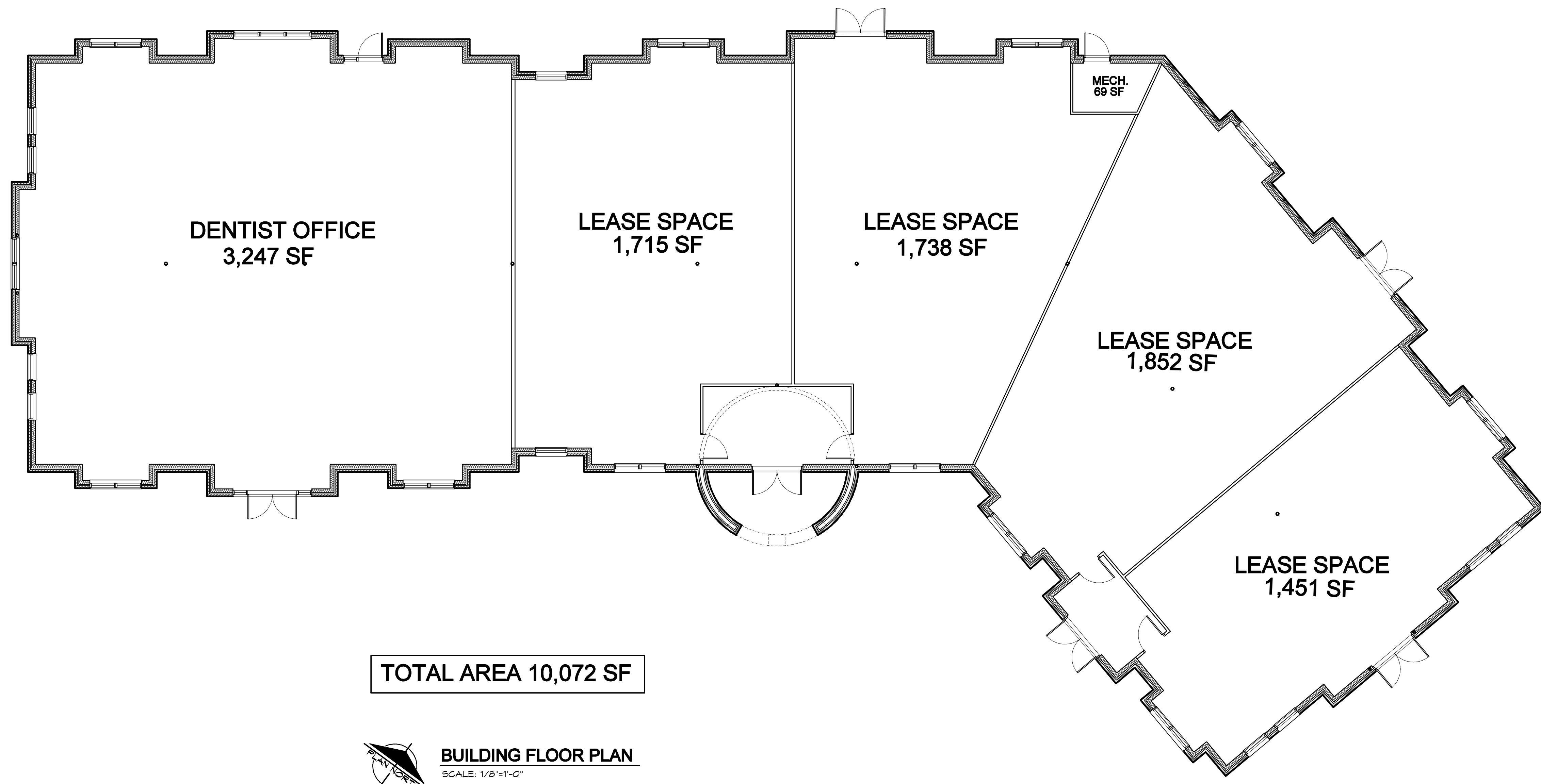


NOT FOR CONSTRUCTION



TOTAL AREA 10,072 SF

BUILDING FLOOR PLAN
SCALE: 1/8"=1'-0"

PROFESSIONAL BUILDING

RICK & PAM LINAVONG
EL DORADO PARKWAY
LITTLE ELM, TEXAS 75068

JOB NO. A0616
DATE: AUGUST 16, 2006

SHEET NO.

OF